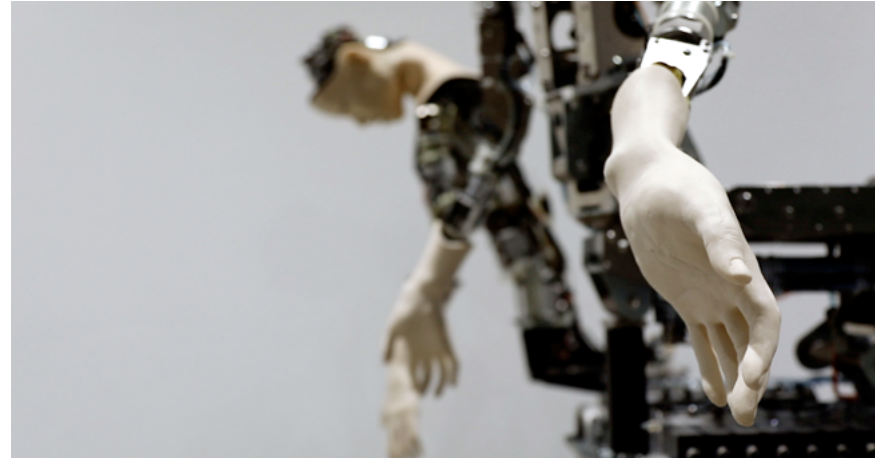
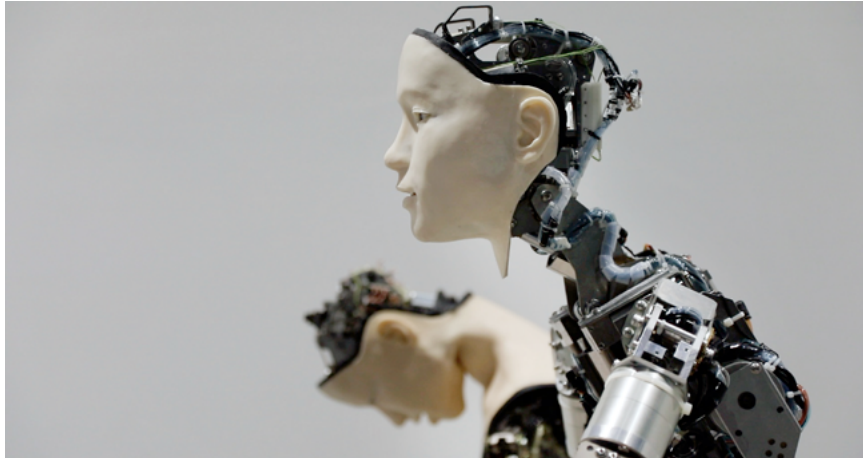


technical Rider

Soul Shift

Justine Emard
Video, 2018, 6'

(With Alter and Alter 2, developed by Ishiguro's Lab, Osaka University and Ikegami's Lab, Tokyo university)



Justine Emard's film *Soul Shift* is the promise of a possible meeting with an earlier version of oneself. Alter is a humanoid robot that awakens to the world when someone activates it. Its singularity lies in its movements, which no human has ever experienced before since they are created with extreme precision by an artificial intelligence. Sensors provide information to its neural network based on which it invents gestures within the constraints of its limbs. When Alter discovers its lookalike yet inactive robot, the memory or « spirit » of Alter 1 is transferred to Alter 2, reminding a form of reincarnation, but without flesh. Face to face, the active Alter appears intrigued by the inertia of this other from which he came, to the point of approaching it in a movement of recognition and affection.

Dominique Moulon



Digital videoprojection HD
Dimensions: 2,25 x4m

Technical requirements:

Projection video 16/9 installed in a totally dark space

The video has to be screened with about a 4meters basis.

The videoprojector has to be at least 8000 lumens minimum and the resolution needs to be HD (HDMI connexion).

The color set up of the projector has to be on dynamic mode.

This installation needs a good sound system, 2 speakers + 1 subwoofer.

The video is looped, played from a brightsign, mediaplayer (with no loop logo) or computer. I can send a H264 or a APPLE PRO RES version. Let me know if you need a special format.

Regarding the spaces, every change, adaptation or monitor option has to be checked and validated before with the artist.



Justine Emard

+33 6 34 62 04 88
studio@justineemard.com

www.justineemard.com